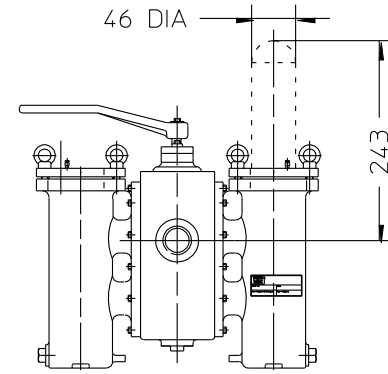
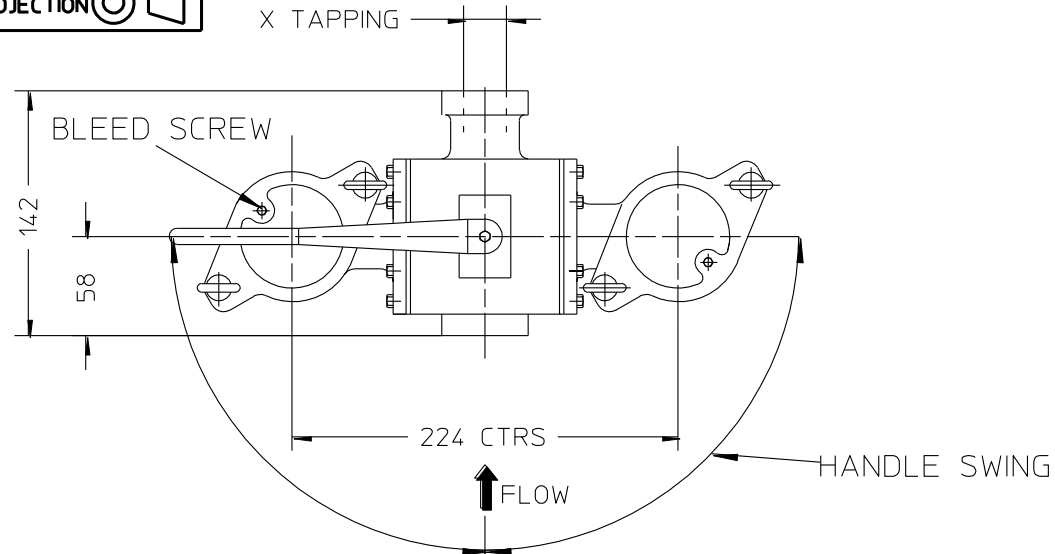
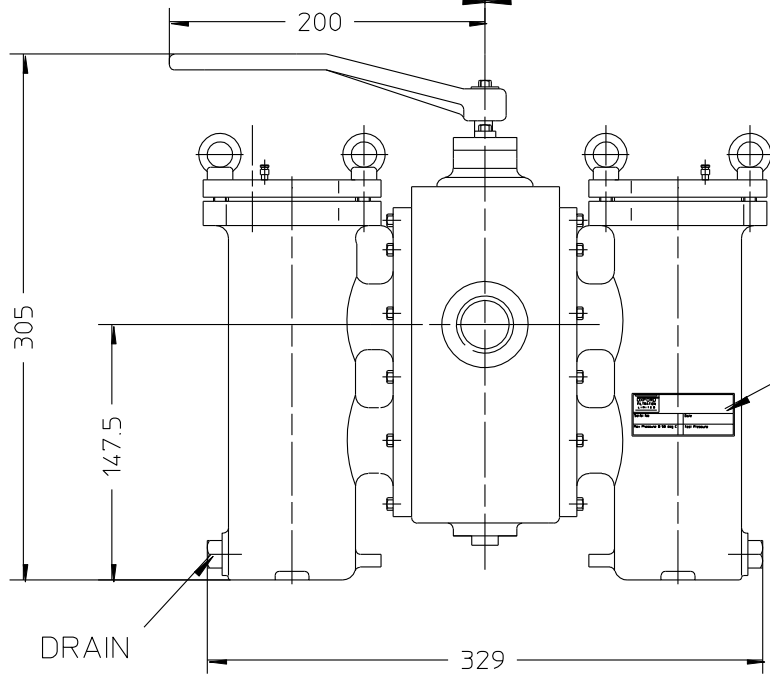


PROJECTION

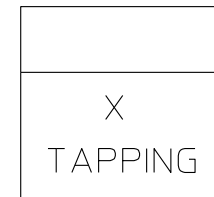
X TAPPING



SPACE TO REMOVE ELEMENT



INFORMATION LABEL



NOTE:-

DN 20 (3/4") MAYBE ACHIEVED BY ADAPTORS  
IN DN25 (1") TAPPING

MAX WORKING PRESSURE

- 13.8 bar (CAST IRON)

TEST PRESSURE

- 21 bar

ALL DIMENSIONS NOMINAL

UNLESS SPECIFIED GENERAL TOLERANCE 0 DEC PLACE +/- 1 1 DEC PLACE +/- 0.4 2 DEC PLACE +/- 1.0 ANGULAR +/- 2 Deg	APPROVED	MATERIAL	DESCRIPTION	
	DRAWN <b>A.S.N.</b>	<b>OXFORD FILTRATION LIMITED</b>	<b>GENERAL ARRANGEMENT</b> DN25 (1") Threaded Dual Filter	
MODIFICATION HANDLE LENGTH ADDED	DATE <b>23/07/13</b>	C 2013 This drawing and the design is the property of OXFORD FILTRATION LIMITED and may not be copied or used for any purpose other than that for which it was supplied unless expressly stated in writing		DRG NO. <b>12523</b>
				ISS <b>5</b>