

ETL - Electro Thermal Fusible Link

Replaceable Thermal Fuse, Rated at 10 amps 230v AC, housed within a two piece metal enclosure with 20.5mm diam. conduit entry. The thermal fuse is a 'one shot' device, providing a Closed Circuit until the fuse reaches the predetermined set temperature, the fuse will then permanently reset to Open Circuit and require replacement prior to further operation.

Installation: Caution, ensure that the ETL is isolated during installation and fuse replacement.

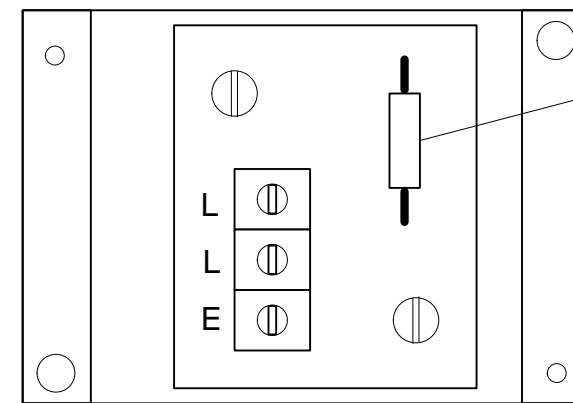
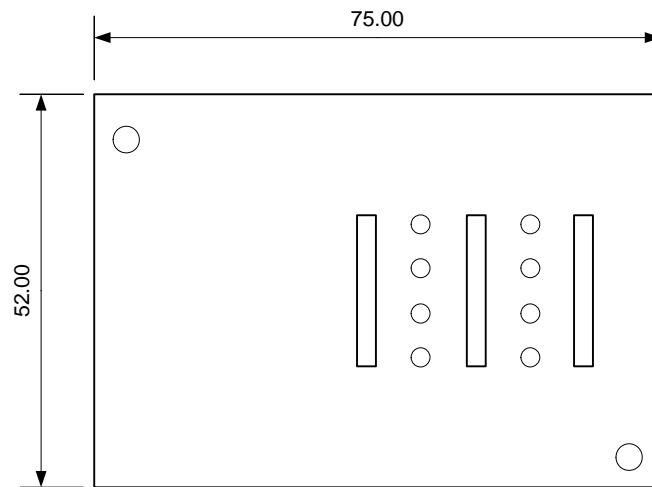
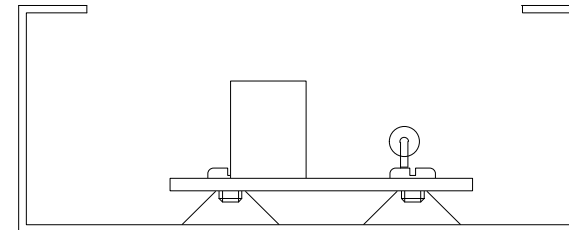
Mount the Electro Thermal Link at a height between 600 and 900mm directly above the equipment which the ETL is to protect, specifically a burner or hot exhaust and ensure that the ETL has adequate natural convection.

Available Fuse Temperatures for Electro Thermal Links

| Temperature | Product Code |
|-------------|--------------|
| 72 deg C | 20-170 |
| 84 deg C | 20-171 |
| 96 deg C | 20-172 |
| 121 deg C | 20-173 |
| 167 deg C | 20-174 |
| 184 deg C | 20-175 |
| 228 deg C | 20-176 |

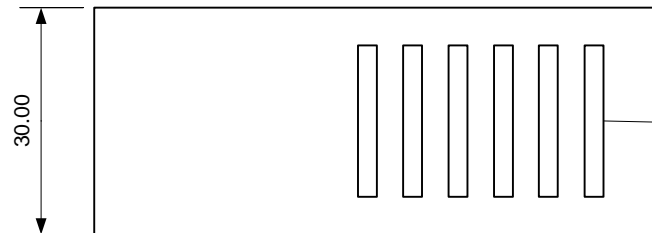
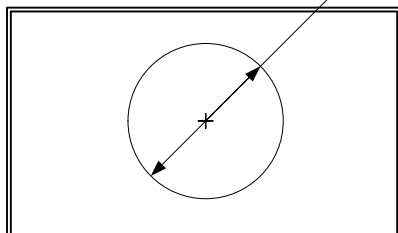
Please visit our website for associated products :

- Solenoid Valves
- Motorised Valves
- Emergency Knock Off Buttons



Replaceable Thermal Fuse

Ø20.50



Ventilation Slots