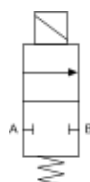


Solenoid Valve - Two Way - Normally Closed

Product No: CL04GV25T

Mechanical Characteristics:

1" BSP Solenoid Valve. Two Way Normally Closed. Lift Assisted Piston. Brass Body. Orifice 25mm. VITON Seals. -10 to +130C. 0-4 Bar (DC). Kv 176. C4 Series Coil: 27W. DIN electrical socket connector to IP65 43650-A.



£POA

Attributes:



Attributes	Details
Body Materials:	Brass
Port Size:	1" BSP
Orifice (mm):	25mm
Seals:	VITON
Pressure Minimum (Bar):	0
Nominal Pressure Max (Bar):	4
Pressure Maximum DC (Bar):	4
KV (L/minute):	176
Coil Series:	C4. 27W (DC)
Coil Protection:	7
Dimensions (mm) A:	100
Dimensions (mm) B:	20
Dimensions (mm) C:	95
Dimensions (mm) D:	115
Dimensions (mm) E:	72.5
Unit Weight (Kg):	1.3

