



Hannay Reels®

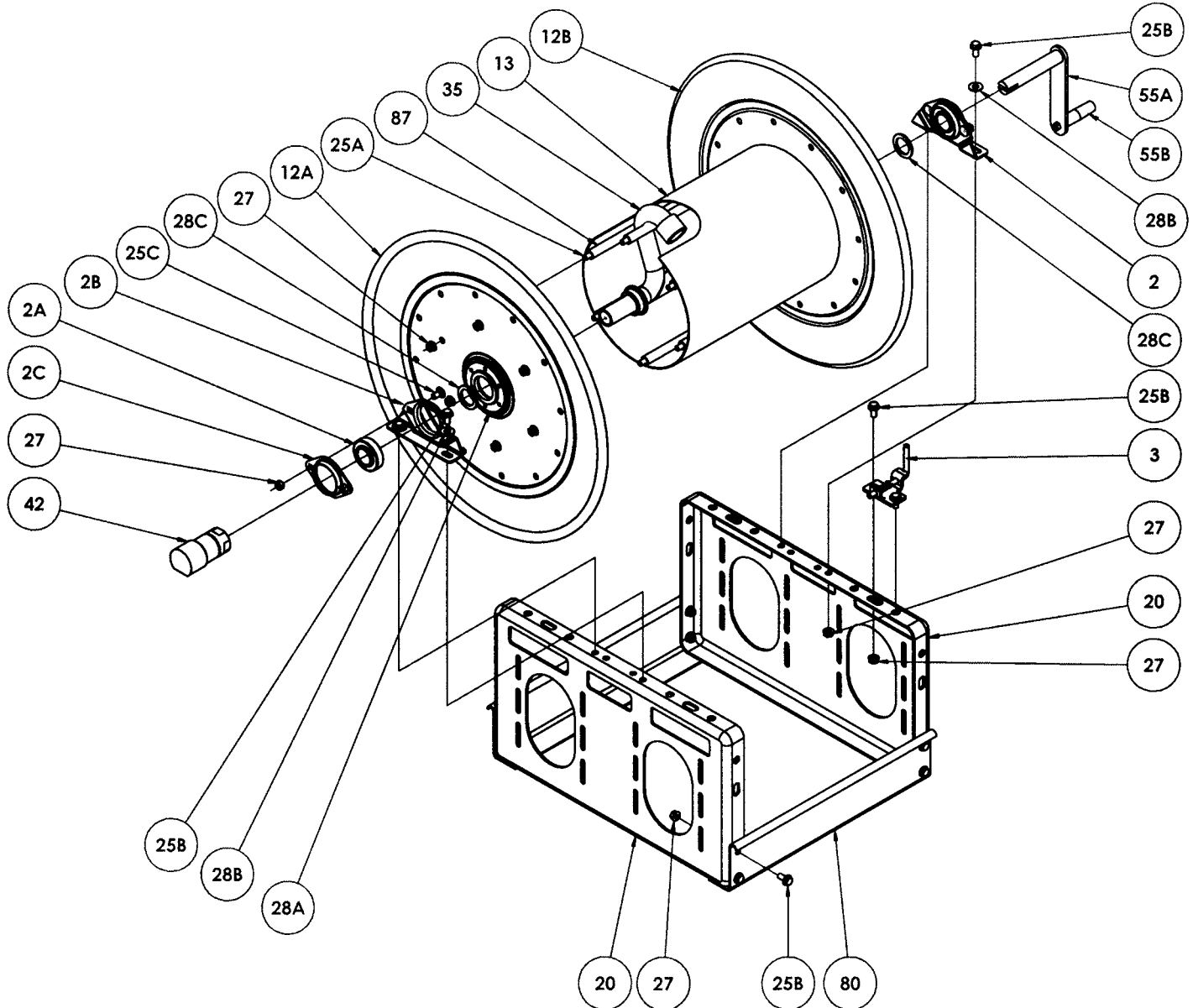
The reel leader.

Hannay Reels, Inc., 553 State Route 143
Westerlo, NY 12193-0159
Telephone 518-797-3791 • Toll Free 1-877-GO-REELS (467-3357)
FAX 1-800-REELING (733-5464)
INT'L FAX (518) 797-3259
Website: www.hannay.com
E-mail: reels@hannay.com

ISO 113

PARTS LIST

SERIES 3000/3100 REELS With Pressed Frame



**PARTS LIST
ISO 113
SERIES 3000/3100 REELS**

When ordering parts

**BE SURE TO SPECIFY COMPLETE MODEL NUMBER and SERIAL NUMBER OF REEL.
USE PART NUMBER!**

<u>Drawing No.</u>	<u>Description</u>	<u>PART NUMBER</u>	<u>Quantity</u>
2	1" self-aligning Bearing Assembly Complete	9902.1400	2
2A	1" self-aligning Bearing Insert Only	9902.1500	2
2B	Pillow Block Housing Piece (E-coated)	9902.2900	2
2C	Bearing Holder Piece (E-coated)	9902.2800	2
3	PL-4 Pinlock	9965.0036	1
12A	Front Disc (25-26)	9903.1321	1
12B	Back Disc (25-26)	9903.1321	1
13	Drum, 10-1/2" Diameter (Specify Model)	9905.3131	1
20	Large Pressed Frame	9906.5031	2
25A	3/8" Carriage Bolt	Specify Model	6
25B	3/8"-16 x 3/4" Spinlock Bolt	9904.2201	14
25C	3/8"-16 x 3/4" Carriage Bolt	9904.0201	4
27	3/8"-16 Spinlock Nut	9904.6200	24
28A	EH-936 Disc Washer	9965.0015	2
28B	3/8" Flat Washer	9954.0007	4
28C	Hub Spacer	9954.0021	as needed
35	1" Hub & Riser (Specify Model)	9901.1600	1
42	1" FxF Swivel Joint	9929.8551	1
55A	Hand Crank Complete	9914.0031	1
55B	Black Plastic Crank Handle w/ Bolt & Nut	9914.0505	1
80	2 x 4 Foot	9907.3000	2
87	3/8" Aluminum Spacer Pipe (Specify Model)	9904.3200	6